

Syracuse Weavers Guild Challenge 2025-26



*Plain Weave - Not so Plain
Challenge Reveal April 11, 2026*

Thanks to the program team for dreaming up this wonderful opportunity to get creative with plain weave.

Thanks to Joyce Lock for facilitating the challenge, leading the group discussions on Zoom, and sending motivational ideas throughout the year.

Thanks to Cameron Taylor-Brown for motivating us with her program on Warp and Weft, a Conversation on Color.

Most of all, thanks to all our guild members who picked up the challenge and shared their plain weave creations!

Christina Rudecoff weaves a Double Log Cabin Tea Towel

- Pattern by Rogue Weaver, Tammy Bast
- My slight modification to the pattern was to add a third color, purple, to the original two color design
- Yarns - double stranded Maurice Brassard 8/2 cotton
Woven on a rigid heddle loom with a 10-dent reed



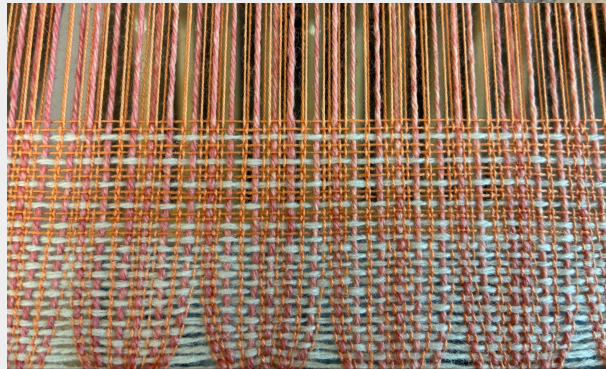
Donna Connery weaves a Thick & Thin Scarf

- Warp & weft in ratio of 1 thick wool (knitting yarn) to 2 thin (10/2) cotton for 24epi
- Warp variegated silk/wool thick and aqua cotton
- Weft black cotton and medium gray wool
- Need extra handling care when mixing materials



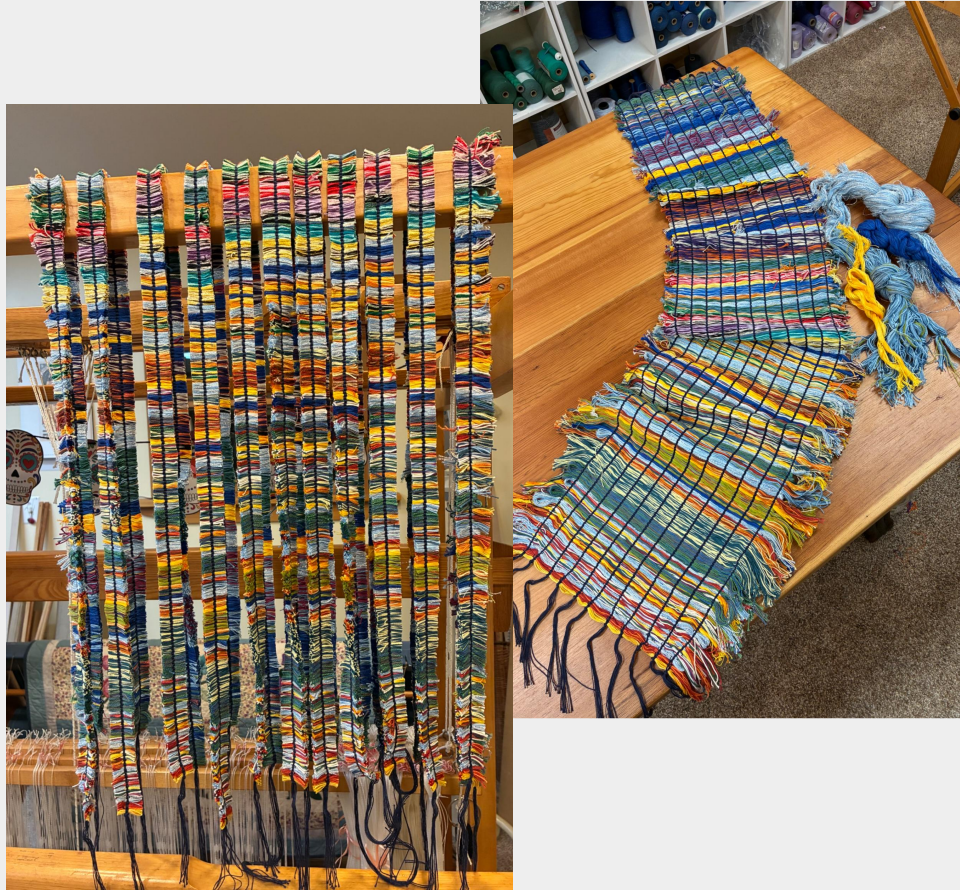
Donna Connery weaves a Thick & Thin Blanket

- Warp & weft in ratio of 1 thick wool (knitting yarn) to 2 thin (10/2) cotton for 24epi
- Gradient only in warp
- Beaming was tricky due to the spring in the wool
- Separating the yarns helped.



Donna Connery weaves Chenille from Thrums

- Woven in January 2026 class taught by Rebecca Lennox at Weaving and Fiber Arts Center in Rochester.
- Warp 10/2 navy cotton threaded for plain weave. All 8 ends sleyed in one dent to make the central cord
- Weft is cotton warp thrum chains
- **So, so, so** much fun to weave!
- These will probably become a pillow slip cover



Eileen Kloss does the Planning for Basketweave

THE PLAN

1.0	.75	cream	single pw	✓
	.25	black	2 x 3 strands	✓
.75	.5	beige	6 x 3 strands	✓
	.25	black	2 x 3	✓
1.25	1.0	blue	13 x 3	✓
	.25	black	2 x 3	✓
1.25	1.0	Sage	13 x 3	✓
	.25	black	2 x 3	✓
1.25	1.0	Mos		✓
	.25	bla		✓
1.25	1.0	Wheat	13 x 3	✓
	.25	black	2 x 3	✓
.75	.50	Tan		✓

SO MUCH MATH. IS IT GOING TO BE A 2/2 BASKETWEAVE? MAYBE A BEIGE WARP AND COLORED WEFT?

8 sections
1/16 4.5
1/16 4.5

MAYBE... COLORED STRIPES OF WARP AND WEFT? THAT CHANGES THINGS MATHEMATICALLY.

THIS IS THE ONE. 3/3 BASKETWEAVE. MORE TABULATIONS.

① dusty blue
② dusky sage
③ Tan
④ Black

T-164
DB = 68
DS = 68
W = 68
TAN
BLACK
DB

Eileen Kloss weaves Basketweave



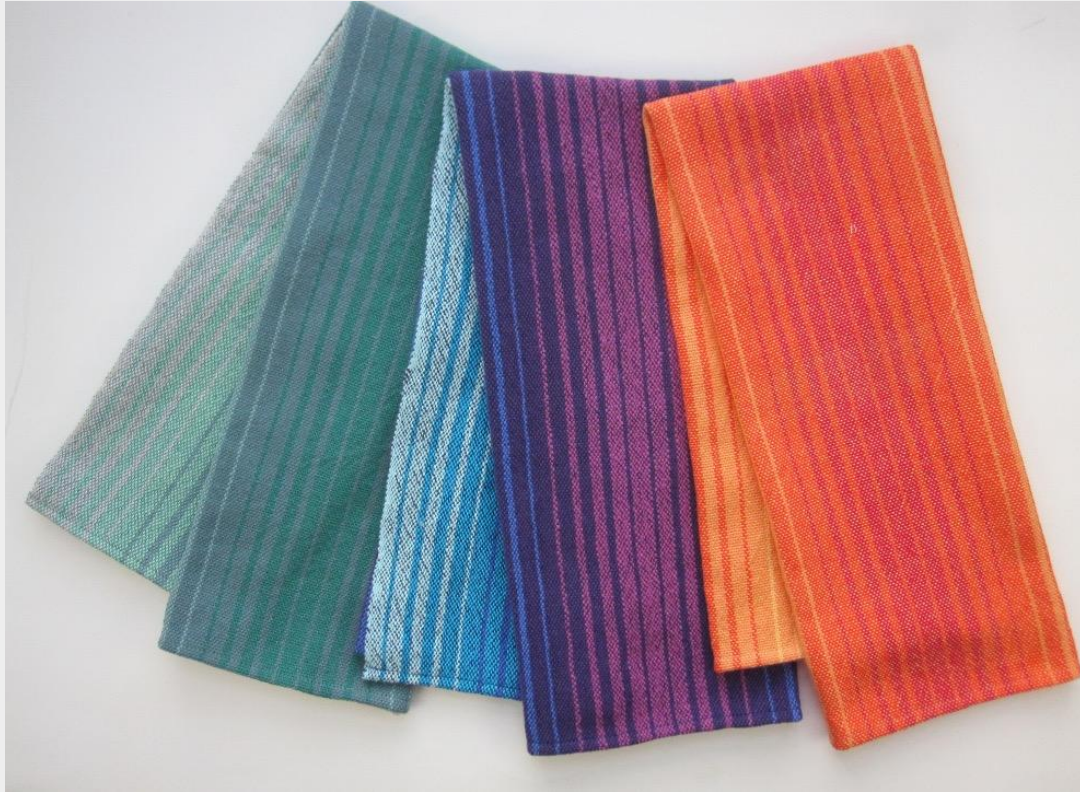
BASKETWEAVE

3 STRANDS OF YARN
X'S 6 COLORS = 18 BOBBINS
(THIS IS THE MATH I SHOULD
HAVE BEEN DOING)

Emily Lennox weaves Color & Weave

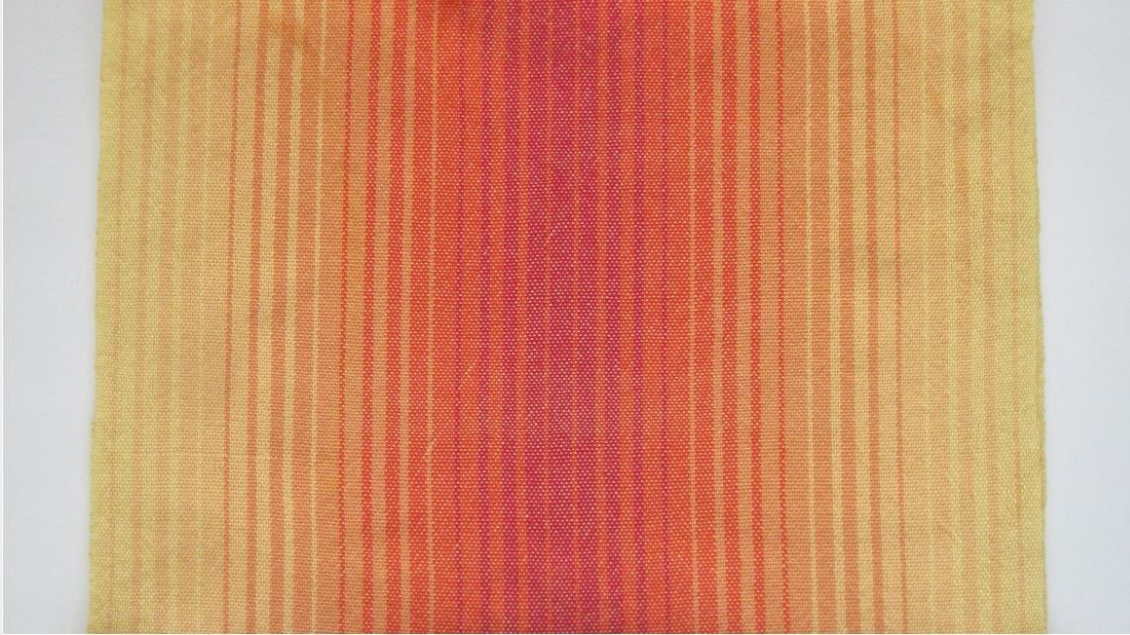


Joyce Lock weaves Towels in Gradient Warp Stripes



Four sets of
towels in 8/2
cotton in
different
colorways

Joyce Lock – Choosing the Warp Colors



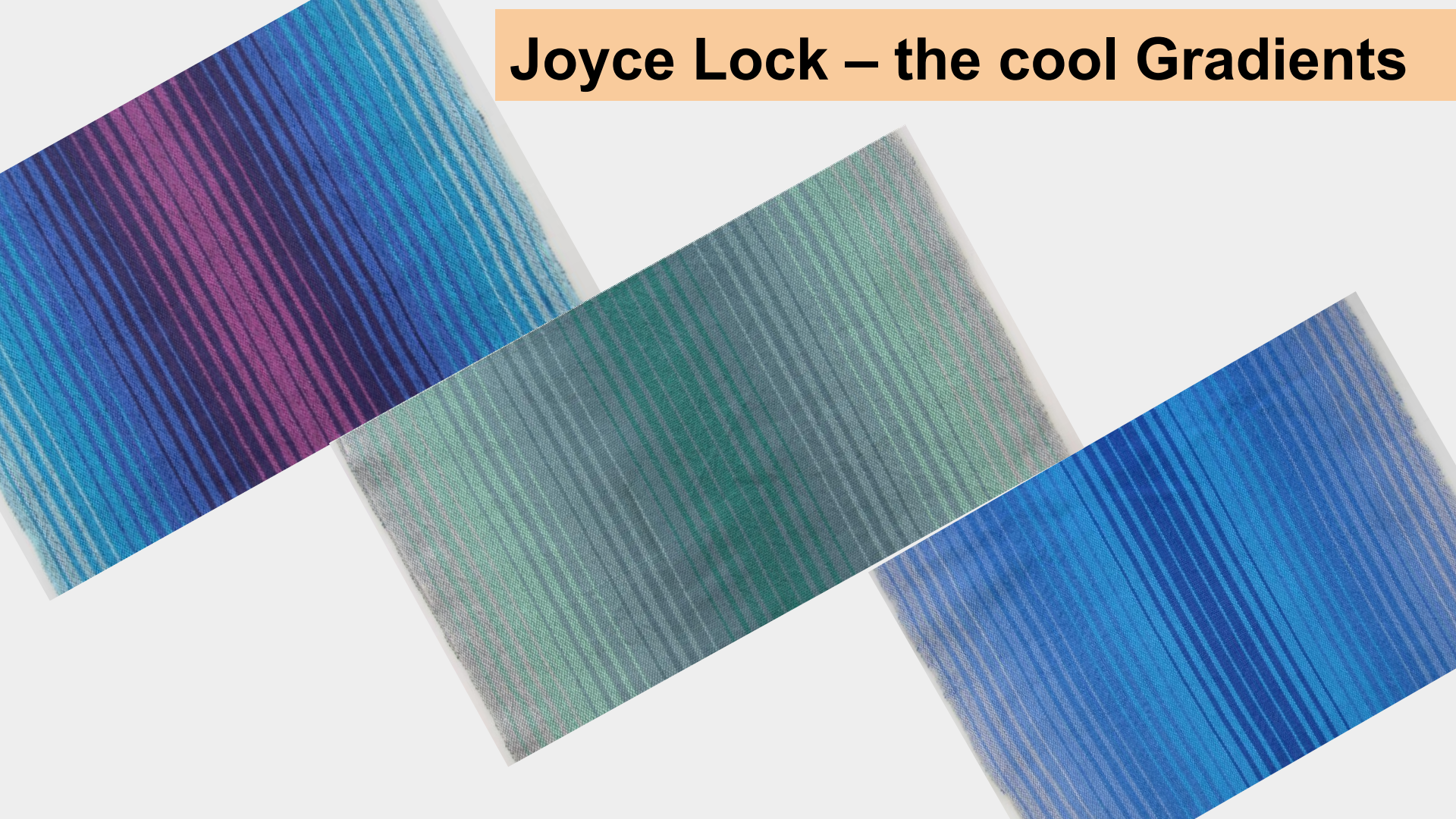
Five warp yarns in an analogous colorway that gradually changed in value from light to dark and then reversed.

Joyce Lock – Choosing a Weft Color



The best weft color was not too dark or too light, but a mid value between the lightest and darkest warp color.

Joyce Lock – the cool Gradients



Karen Bellimer weaves Complimentary PW

- Double weave overshoot in an ancient rose pattern
- 8/2 tencel



Karen Smith weaves table linens...

...Using the warp that
remained at the end of a block
weave

- 30 epi
- 16/2 cotton warp
- 10/2 cotton weft

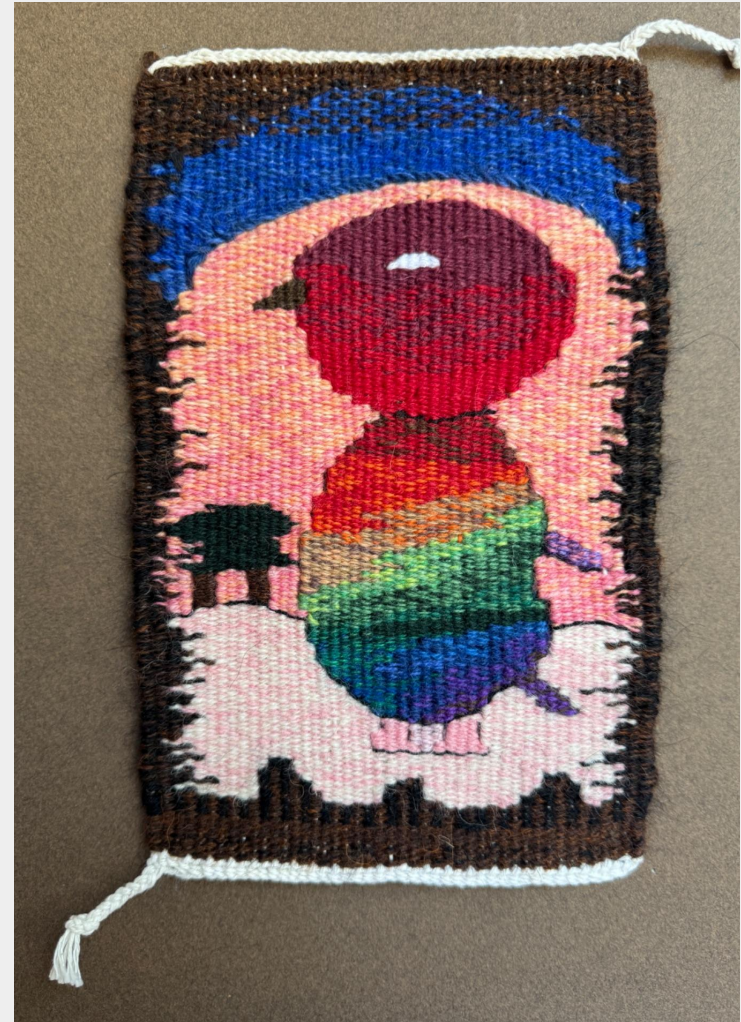


Lauren Whitney weaves Pin Loom Rugs

- White rug is sock loopers and upholstery trim stripes.
- Dark rug is upholstery trim with loopers accents.



**Maria
Aridgides
weaves
Tapestry
from her
Grand
daughter
Anna's
Penguin
drawing**



Maryellen Stearns shows us what “the kids” are weaving!



Nancy Gaus weaves big with Wool Blankets

- Wool blanket woven on a barn frame loom at the Newbury School of Weaving in Vermont.
- Harrisville Shetland wool at 8 epi in a cross bar check pattern.
- Added a third color (bright kiwi green) to the original idea of dark blue and oatmeal to give it more of a modern feel.
- Twisted the fringe for durability.
- Finished dimensions 42" x 80".



Nancy Gaus weaves Wabi Sabi Scarf

- Used the “Wabi Sabi” technique promoted by Tammy Best, *The Rogue Weaver*.
- It’s a stash buster using 11 yarns in total ranging from 10/2 mercerized cotton to Shetland wool to gold-flecked vintage bouclé to bright aqua acrylic.
- What fun to sit on the floor pulling out and assembling a set of yarns of all weights and textures that I would normally not combine in a traditional project.
- Final sett 8 epi with dimensions on the loom 17” x 84”.
- It was quite challenging for this orderly weaver to create random stripes beneath the regular grid of white squares.



Paulette Quinn creates custom footwear using Inkle Weaving

- Custom footwear designed to assist the novice inkle weaver in knowing from which direction to insert the warp when S-threading or Z-threading tablet weaving cards.
- May also be worn as attractive house slippers when not weaving!



Sue Szczotka weaves an abundance of PW projects!



Roberta Mou weaves Baby Blankets



Susan Mehringer weaves Color Block Towels



Valerie Kaiser weaves a blanket in Double Width Double Weave

- 8 epi using Cascade 220 Superwash (light worsted) yarn, alternating 6" blocks of cream & sage
- Before finishing, it was 48" W x 82" L. After washing & hemming it is 43" x 66"
- The length drew in more than the width but the squares remain fairly square with 5.5" W x 5" L.
- Wove an extra 2" at the top and bottom to allow for a rolled hem.
- It was a lot of fun to figure out the process of double width and I can see myself making more blankets like this in the future.

