

THRUMS

President's Message

Happy New Year, friends. I am really looking forward to our gatherings this year, to join with people who speak the language of weaving and understand why it's so important to have one more pair of sharp scissors or that extra cone of 10/2 unmercerized cotton on hand. You never know when you might need that set of emergency dish towels!

I think we have a lot to look forward to, with many thanks to our planning team whose creativity set us up for another diverse year of programs. From tapestry to handspun nettles to band weaving to weaving history, there's something for everyone. The start of our year together is when anticipation of the guild's annual weaving challenge is high. So, without further delay, I'm happy to announce our 2025-26 challenge is Plain Weave.

What makes this plain weave challenge seem so right is that all of our members can pursue this cornerstone weaving structure, as it can be done on any loom and accomplished at any level of weaving ability. Plain weave is important as one of the big 3 weaving structures alongside twill and satin. Look at your clothes and home goods. Are you surprised that most of what you see is plain weave? It's the first structure most people try, and with a thread overlap of under 1 over 1, its structure is a basic concept. But there's no place to hide with handwovens made in plain weave. It's just you and the maximum number of interlacements of warp and weft possible on a loom! But the variety of personal challenges is limited only by imagination. Will the challenge lie in color, texture, yarn, yardage, end product, warping method, shuttle type, painted warps, dyeing? When 50 weavers have 8 months to execute an idea, it's likely we will see it all.

With so many possibilities, we have two specific programs on our schedule to help pave the way to the challenge reveal in April 2026. First, look to be inspired by [Barb Tewksberry](#), Hamilton College professor and author of *The Art of Kiltmaking*, who will give us a maker's view of weaving tartans for kilts. Then, we will further our understanding of color interactions when [Cameron Taylor-Brown](#), renowned textile artist and teacher from CA, delves into the impacts of making color decisions in warp and weft. And lucky for us, *Weft Magazine's* first issue is all about Plain Weave. So I hope the year brings you to our monthly programs and meetings, as we share our excitement about all things weaving.

Happy Weaving! Donna C.

Guild Officers 2024-2026

President

Donna Connery

1st Vice President

Valerie Kaiser

2nd Vice President

Elaine DuBois

Secretary

Eileen Kloss

Treasurer

Donna Johnson-
Brown

Mission

The mission of the Syracuse Weavers Guild is to stimulate an interest in the art and craft of weaving, achieve a high standard of excellence and help encourage all persons interested in weaving.

SWG Study Groups and Special Projects | Elaine DuBois

Study groups are small groups of members that share a common weaving interest. Participants gather either in person or via Zoom outside of regular guild meetings. for more information contact Elaine, or the group leader listed for your particular group of interest.

Ada Dietz

(Donna Connery)

Our Ada Dietz [Algebraic Expressions](#) study group will continue to explore this mathematical design process and exchange samples in 2025-26. Look for the *Thrums* article for details of our 2025 sample exchange. All are welcome to join the group for 2025-26. This summer, fellow study group member Chris H. and I caught up with Michelle Amos, Director of the [Little Loomhouse](#) at Rabbit Goody's biannual [Textile History Forum](#). Michelle was there to present the history of The Little Loomhouse, with emphasis on its founder, Lou Tate, a textile historian who profoundly influenced the Arts and Crafts Revivalist Movement of the 1930s-60s. Not only did Lou publish *Algebraic Expressions* in 1949, but we also learned she was an advisor to Marguerite Porter Davison and closely acquainted with two First Ladies (Hoover and Roosevelt).

Helping Hands

(Donna Connery)

Construction of the new [Thousand Islands Art Center Home of the Handweaving Museum](#) is underway, with an opening ceremony planned for June 2026. That means our working group is very busy with inventory of the 22,000 handwovens contained in the collections. Following weekly trips to Clayton in August, the pace for the fall looks just as busy.

To Contact a Fellow SWG Member:

- Use your Member Booklet
- Write to SyracuseWeaversGuild@gmail.com

Tapestry

(Donna Movsoovich)

The Tapestry Study Group meets on the 4th Tuesday of the month at 2:00-3:00 pm via Zoom from September to May. We will be looking at a possible collaboration tapestry project for this 2025-26 year. At our first meeting we will explore different ways to combine our efforts and weave with a theme! Everyone is welcome to join us. We send out a zoom invitation every month to the whole guild.

Small Bands

(Nancy Smothergill)

The small bands group meets in-person monthly after the guild meeting.

Rigid Heddle

(Valerie Kaiser)

Our group has a virtual option and generally meets the 3rd Monday of the month from 6:30-7:30pm to talk about ongoing projects and goals. We met in-person in July to work together to collaborate on tips and tricks for direct warping. Some members are working on their first project, some are trying tapestry, and some are trying clasped warp (among other things). We welcome all skill levels. Contact Valerie if you wish to learn more or join in the conversation.

Shoddy Book Club

(Nancy Smothergill)

The next book has not yet been determined.

Syracuse Weavers Making Waves

Sue Szczotka has just had her rep weave sculpture "Nature's Light" accepted into Everyday Life, Everyday Art, an art show at Cloudcroft Studios in Owego, NY. The show is open August 23rd through September 27th, Thursdays through Sundays 12-4 pm with late nights every Thursday until 8 pm.

New Member Introduction | Loretta Arlotta

I am interested in weaving. I admit I know little. I have a tapestry loom and am having fun with it but really don't know how to end it. I have been watching Youtube but I am a learner that has to be taught in person. I knit and just learned to knit brioche. I joined this group to see what you, experienced members, weave. Thank you.

Traveling Loom | Elaine DuBois

Our traveling loom has just completed its tour of krokbragd and we are interested in hearing from you! What would you like to try? The traveling loom offers the opportunity to explore a new structure or technique on a pre-warped guild loom. For a nominal fee to cover supplies, you will get complete instructions with the loom that gets passed around to interested guild members. Send your suggestions to Elaine. Let's learn together.



Nature's Light by Sue Szczotka

SWG Bands Together for EGLFC | Nancy Gaus



Band in process. EGLFC colors arranged using Ada Dietz' *Algebraic Expressions*

Calling all members! This year, EGLFC is providing key fob keepsakes to attendees, with bands woven by members of SWG, and all assembled by Nancy G. There is still time to help out by making bands or narrow strips of weaving and getting them to Nancy G by September 15th (earlier submissions encouraged). The only criteria is that they be ½-¾" wide and 8-10" long. She will also take scraps of handwoven fabric at least 8-10" long and 2" wide (preferred orientation in the direction of the warp, although she will accept weft-aligned strips too). If you have time to help out, be sure to contact Nancy G for more info. Email Nancy to arrange pick up or delivery,



or bring them to the September guild meeting.

Ada Dietz Sample Exchange $(a+b)^2$ | Valerie Kaiser

The Ada Dietz Study Group met on a blustery morning June 1 for brunch at Thirsty Owl Winery to swap the samples from our first study, an exploration of a binomial expression. Each member used cotton warp and had free reign to explore whatever structure they chose, as long as it was an expression of $(a+b)^2$. Chris H. used color to express the equation with Rosepath threading, using incidental warp to separate variables. Eileen K. used colors inspired by the Blue Jay to weave a structure of Ms and Os. Elaine D. created a sample in shadow weave using the Powell method of drafting for her variables. Donna C. used the method to generate two small bands using tablet weaving using color to express the variables card-by-card, including one using EGLFC colors. Valerie K. used a twill structure, expressing the variables in both warp color and threading. Each member received a sample card from the others and the guild sample library now has additions from the group!



June 2025 "Ada" sample exchange (members samples clockwise from top): Chris H, Elaine D, Valerie K (x2), Eileen K, Donna C



Emily L. shows us a beautiful dress woven with a fan reed by her mom, Rebecca Lennox, on it's way to the CNY Fiber Festival's Viv Fulton Memorial Weaving Competition.

Upcoming Fiber Events

Sept 6-7, 2025 Saturday 10am-5pm Sunday 10am-4pm	Endless Mountain Fiber Festival	Harford Fair Grounds 485 Fair Hill Road New Milford, PA 18834
Sept 13, 2025 Saturday 10am-5pm	Western New York Fiber Arts Festival	EA Classic Rink 41 Riley Street East Aurora, NY 14052
Sept 13-14, 2025 Saturday 9am-5pm Sunday 9am-4pm	Sheep and Fiber Festival	Hunterdon County Fairgrounds 1207 NJ Route 179 Lambertville NJ 08530
Sept 20-21, 2025 Saturday 10am-5pm Sunday 10am-4pm	Adirondack Wool & Arts Festival	Adirondack Wool & Arts Festival 392 Old Schuylerville Road, Greenwich, NY 12834, USA
Sept 20-21, 2025 Saturday 10am-5pm Sunday 10am-4pm	Lehigh Valley Fiber Festival	Allentown Agri-Plex 1998 Liberty Street Allentown, PA 18104
Oct 4-5, 2025 Saturday 10am-5pm Sunday 10am-4pm	Vermont Sheep & Wool Festival	Tunbridge Fairgrounds 1 Fairgrounds Lane Tunbridge, VT 05077
Oct 11-12, 2025 Saturday 9am-5pm Sunday 10am-3pm	Little York Fall Fiber Arts Festival	Little York Pavilion 6799 Little York Lake Road Preble, NY 13141
Through Oct 31, 2025	Farm to Fabric	Tioga History Museum 110 Front Street Owego, NY 13827



A lively collection of towels from members of the guild at our annual towel exchange at the May luncheon.

Syracuse Weavers Guild 2025-2026 Programs | Valerie Kaiser

9/6

Guild Challenge, and From Then to Now

Part 1: Guild Challenge: Plain Weave - Not So Plain

Challenge yourself to explore Plain Weave this year! The ways it can appear are much more complex than "alternating one thread up, one thread down." Beyond color and texture effects, think basketweave, log cabin, shadow weave (debatable), rep weave, ikat, crammed and spaced warp and weft, pleating, differential shrinkage, weaving with energized yarns, inkle bands and more.

Presenter: Joyce Lock

Part II: From Then to Now

"Then" is 1969. It's an important year in the world, and also in the life of Mary McMahon, an elementary art teacher in the Churchville-Chili School District. She is 25 years of age, and that year will be pretty important for her too....the start of two big life adventures that continue right until today. We'll look at the pictorial record and see what transpired in those more than 50 years...a look over the life of a fiber artist.

Presenter: Mary McMahon

Facilitator: Nancy Smothergill

10/4

Field Trip: Fenimore Farms and Country Village

Take time with your fellow handweavers to travel to Fenimore Farm and Country Village in Cooperstown, formerly known as the Farmers Museum. Join us at 10 AM October 4th, 2025 at the museum for a docent guided tour of a 19th century village. We will explore more than 2 dozen authentic, historic buildings with a focus on weaving and fiber arts. After the 1.5 - 2 hr tour you will be free to explore on your own. Wear comfortable shoes and dress appropriately for the weather. So save the date and watch for coming details!

Facilitator: Elaine DuBois

Note:

This field trip is rapidly approaching. The program will be ending around noon, at which time you are free to stay and explore on your own or leave. Fenimore Farm does not allow outside food to be brought in and once you exit there is no readmission. If you wish to stay and need food, there is a café on site that offers light fare and snacks (no menu is available) or you may pre-purchase a boxed lunch for \$20 (the menu is attached at the end of this issue). Boxed lunches must be ordered and paid in advance. Payment and menu selections are due at the September meeting. Please see Elaine if you have any questions.

11/1

Tartans and Kilts

Ever wonder about how plaids relate to tartan or why tartans get registered as unique designs? Hear from an expert in the field, Barbara Tewksbury, who is both a skilled kilt maker and geology professor. She'll share her passion for this traditional Scottish garment, explaining the history of tartans and the unique process of kilt making. Learn about the intricate details of kilt construction and the dedication required to create these beautiful and historically significant pieces of clothing.

Presenter: Barb Tewksbury

Facilitator: Joyce Lock

12/6

Temari Fascination (Hands-on program)

The ancient craft of temari is a beautiful three dimensional form of embroidery. Symmetrical stitches are built up on the surface of a thread-wrapped ball to make intricate patterns. Originally a functional plaything for Japanese children, temari are now suitable for gifting and they make unique home decorations. In this hands-on workshop we will learn how to mark the surface of pre-wrapped balls and make the rhythmic layers of stitching that result in a kaleidoscope of color. You will be provided with a list of supplies and instructions on how to wrap the balls that will be embellished during the workshop.

Presenter: Nancy Gaus

1/3

Warp and Weft: A Conversation in Color

Weaving is a conversation between warp and weft - both parties have something to say and we want the conversation to remain friendly! This lecture looks at ways to successfully mix warp and weft colors, and explains elements of color, how to select harmonious warp and weft, and how weave structure can influence the conversation.

Presenter: Cameron Taylor-Brown

Facilitator: Donna Connery

2/7

The Nettle Dress (Film)

The Nettle Dress is a beautiful film documenting the healing journey that a man takes following the death of his wife. He makes a seven year odyssey, learning about slow fashion while spinning, weaving and sewing a dress by hand made only from locally foraged stinging nettles. He learns the healing power of nature and creates a powerful tribute to honor his wife. The film is accompanied by a pre-recorded Q&A with the artist.

Facilitator: Sue Szczotka

3/7

The Wide World of Narrow Bands

There has always been a need for bands, ropes or braids to tie things together, hold things up, etc. In this program we will explore the various types of woven bands that have been created and used around the world, and the techniques for weaving the bands. Various weaving arrangements will be illustrated with a variety of weaving setups available to look at and try if you wish.

Presenter: Nancy Smothergill

4/4

Guild Challenge Reveal

Facilitator: Valerie Kaiser

5/2

Annual Luncheon and Towel Exchange

Please join us for our final gathering of the year.

Location: All Programs will be at the Good Shepherd Lutheran Church Community Room, 7248 Highbridge Road, Fayetteville, NY 13066 with the exception of the October field trip and the May luncheon.

Refreshments | Sally Meyers

Refreshments volunteers provide a snack or dessert and hot water. Members should bring their own lunch, utensils, mug, etc. Our supplies are in a basket placed in a storage cabinet provided by the church. Please bring any other questions or concerns to Sally Meyers.

Duties:

- Know your day. Sally emails a reminder about a week before the meeting.
- Arrange for someone to take your place if you cannot make it and notify Sally.
- Communicate with your partner.
- Provide dessert.
- Arrive early to prepare the table and hot water.
- Clean up the food area.
- If you notice that items are needed in the supply baskets, let Sally know.

Volunteers:

9/6/2025: Donna Connery, Chris Haefner
11/1/2025: Jayshri Prasad, Margaret Welch
12/6/2025: Emily Lennox, Eileen Kloss
1/3/2026: Roberta Mou, Joyce Lock
2/7/2026: Linda Miller, Karen Smith
3/7/2026: Paulette Quinn, Nancy Gaus
4/4/2026: Sue Szczotka, Sally Meyers

THANK YOU all for volunteering!!

Library | Donna Connery

<https://syracuseweaversguild.org/guild-library/>

We just added a charter subscription to the new (2025) weaving magazine, [Weft](#), to our guild library. With quarterly distribution, it focuses on one topic per issue. We have Plain Weave (Issue #1) and Warp (#2) in hand, which will be followed by Table (#3), Drapes (#4), Twill (#5), Cotton (#6), and No Waste (#7). One thing

I find helpful is that different authors have different opinions on aspects of weaving, and the editors of *Weft* put those discussions side-by-side in the same issue. For example there are passionate discussions in issue #2 about B2F and F2B warping and why you should/shouldn't use paper to separate warp layers when beaming. Please note: The current issues will be available at in-person meetings but must be returned the next month so as many people as possible can make their acquaintance!



Many thanks to Sue Szczotka for donating these books to the guild library, thus adding to the mix of resources for tapestry, card weaving, Huck lace, and general weaving guides.

Membership | Roberta Mou

Our Membership runs from May-May, but we welcome new members any time!

Dues:

Regular: \$30.
Senior (over 62): \$25.
Joining after January: \$15.

Join or renew by sending me the form with your dues or via Paypal.

To pay online, sign into your PayPal account and send the dues to membershipSWG@gmail.com. *Select "send money to a friend" so the Guild does not pay the transfer fee.* Please include all your contact information in this field.

To pay by check, make checks payable to *Syracuse Weavers Guild* and mail to:

Roberta Mou
205 Burlington Drive
Manlius, NY 13104

Name _____

Phone _____

Email _____

Address _____

City _____

State _____ Zip _____

(For new members) What skill level do you consider yourself?

(For new members) How did you hear about the SWG?

Web Sites and Social Media

SWG Website - Joyce Lock - <https://www.syracuseweaversguild.org>

Visit the website to see the guild calendar, newsletters, a description of the annual guild challenge, activities such as study groups, the FAQs webpage, and a list of resources for weavers.

Instagram - Valerie Kaiser - [syracuse_weavers_guild](#)

Use Instagram to promote the guild and show off our accomplishments. Valerie shows how to post our photos and announcements in a quick 12-minute talk: <https://youtu.be/zCUWrwG6eBk>

SWG Library catalog - Donna Connery - <https://www.librarything.com/catalog/syracuseweaversguild>

SWG has a library available for members to borrow weaving books, magazines, and DVDs. All you need to do is:

- Access our catalog on LibraryThing using the URL above
- Search our catalog (not all of LibraryThing) on keyword to see what we have
- Let Donna know by the Friday before meetings what you'd like

Ravelry group - Donna Connery - <https://www.ravelry.com/groups/syracuse-weavers-guild>

Post questions, challenge discussion topics, and photos of your projects.

Halcyon Yarn - Joyce Lock - <https://halcyonyarn.com/guild/>

When placing an order with Halcyon Yarn, note that you are a member of SWG (by phone, or in the Comments box for web orders), to net SWG 5% of the sale.

SWG Video Archive - Nancy Gaus - Link to playlist is available by request.

Recorded videos of our past monthly programs are available for self study or for study groups. Available to members only.

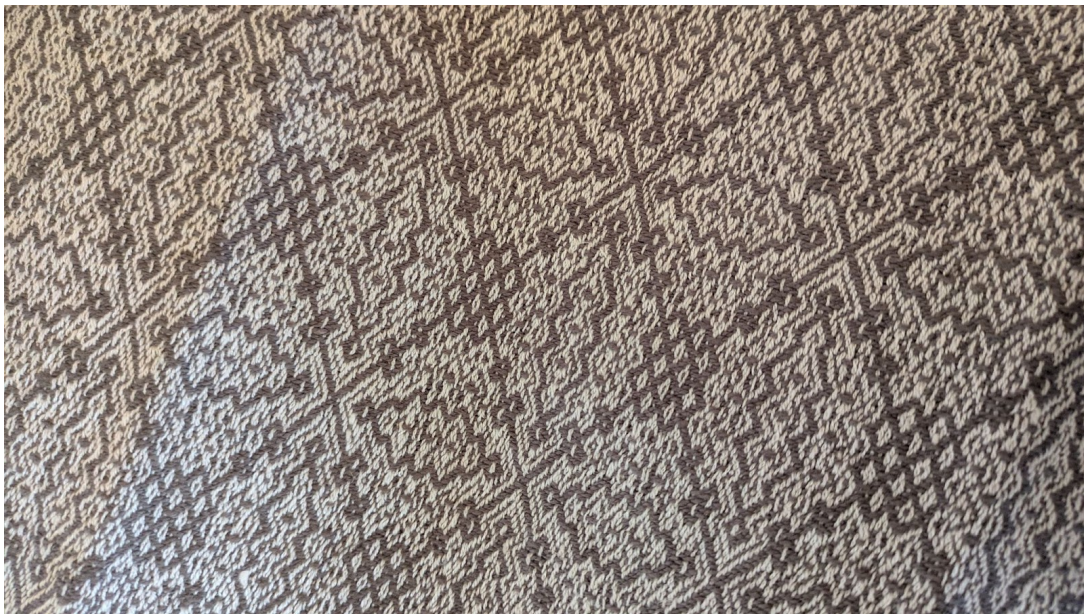
Members Weaving Interests and Looms - Joyce Lock - Link to file is available by request.

Have a question about a weave structure or loom? Take a look at this list of members' weaving interests and the looms they own. Want to be a mentor to others? Add your interest and the looms you own to the list. Available to members only.

Syracuse Weavers Guild Looms for Rent | Joyce Lock

Rental fee is \$2 per week. If interested in borrowing one of these looms and it is available, please contact the person listed in the table.

Description	Current Use	Contact	Notes
Kyra 22" 4S table loom	Available	Joyce Lock	
Kyra 22" 4S table loom	Not available	Valerie Kaiser	
Peacock 12" 2S loom #1	Available	Joyce Lock	http://possumjmandelizabeth.com/adjusted_images/loom_table_plaid.jpg
Peacock 12" 2S loom #2	Available	Joyce Lock	http://possumjmandelizabeth.com/adjusted_images/loom_table_plaid.jpg
Peacock 12" 2S loom #3	Available	Nancy Smothergill	http://possumjmandelizabeth.com/adjusted_images/loom_table_plaid.jpg
Inkle looms	Available	Donna Connery	
Purrrington Norris 14"12S table loom	Available	Joyce Lock	http://www.purrringtonlooms.com/tablelooms.htm
LeClerc Dorothy Green Model 12" 8S table loom	Available	Joyce Lock	https://www.camillavalleyfarm.com/weave/leclerchistory.htm Scroll down to find table looms.
LeClerc Dorothy 15" 8S table loom	Available	Joyce Lock	http://www.camillavalleyfarm.com/pics/leclerc/ldor007.jpg
Schacht 25" rigid heddle loom	Not available	Paulette Quinn	https://schachtspindle.com/products/flip-rigid-heddle-looms



A closeup of a 17th century gebrochene Ms & Ws twill woven by Donna C as gift napkins for family in Ireland.

Committees

Booklets

Nancy Smothergill

Communications

Meg Welch

Equipment Coordinator

Joyce Lock

Library

Donna Connery

Meeting Space Liaison

Lois Koenig

Meeting Tech Support

Nancy Gaus

Membership

Roberta Mou

Newsletter

Susan Mehringer

Program

Valerie Kaiser

Refreshments

Sally Meyers

Sample Book Curator

Eileen Kloss

Social Media

Valerie Kaiser

Special Projects

Elaine DuBois

Website Administrator

Joyce Lock



Clara Rose Thomas at the same c.1790s loom, the day she passed it along to DonnaC in 2017.



Donna C set up her 1790 barn frame loom at the Tioga County Historical Society exhibit *Farm to Fabric*. It's good to know Clara Rose Thomas' loom is still at work teaching others. The Shuttles and Spindles Guild of the Newark Valley Historical Society will support the exhibit by demonstrating spinning and weaving at the museum September 13.

Fenimore Art Museum & Fenimore Farm Lunch Box Menu
Brimstone Bakery, Sharon Springs, NY

Handled Gable Box Lunch containing (choose one):

- House-Made Roasted Vegetable Salad with Hummus, Tahini, Late Summer Tomatoes, Arugula with Honey-Tahini Vinaigrette **GF/Vegan**
- Brimstone BLT on House-Made Brioche with Crispy Bacon, Beefsteak Tomato & Chipotle Mayo
- Grilled Mediterranean Chicken Salad with Mixed Greens, Fennel, Olive & Hummus with Red Wine Vinaigrette

All Served with (choose one):

- Mediterranean Quinoa Salad with Pistachio, Scallions & Mint **GF**
- Orzo Salad with Pecans, Black Currants & Fin Herbs

All Lunch Boxes to also include:

- Fresh Fruit
- Brimstone Snappy Ginger Cookie Bag (or Gluten Free) Gingersnaps as needed
- Water
- Napkin & Utensils

Price Per Lunch Box: \$20.00